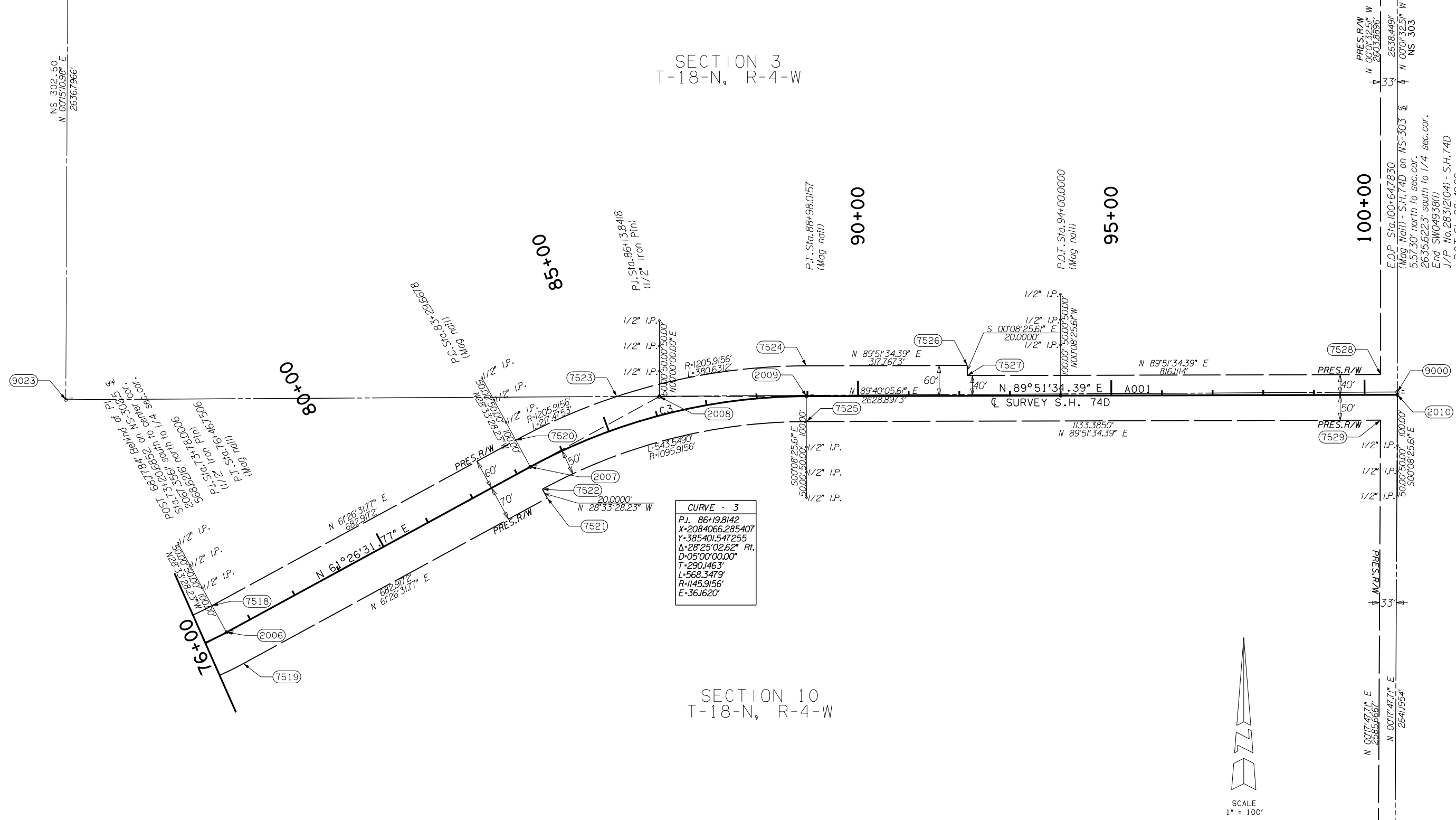


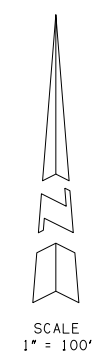
OKLAHOMA DEPARTMENT OF TRANSPORTATION					
FED. ROAD DIST. NO.	STATE	PROJ. NO.	FISCAL YEAR	SHEET NO.	TOTAL SHEETS
	OKLA.				
DESCRIPTION			REVISIONS	DATE	

SECTION 3
T-18-N, R-4-W

SECTION 10
T-18-N, R-4-W



CURVE - 3	
P.I.	86+19.8142
X	2084066.285407
Y	385401.547255
Δ	28°25'02.62" Rt.
D	05°00'00.00"
T	290.1463'
L	568.3479'
R	1145.9156'
E	36.1620'



PRES. R/W N 00°01'32.5" W 2603.8896'
 N 00°01'32.5" W 2638.4491'
 N 00°01'32.5" W NS 303
 E.O.P. Sta. 100+64.7830
 (Mag Nail) - S.H. 74D on NS-303 5.5730' north to sec. cor.
 2635.6223' south to 1/4 sec. cor.
 End SW04938(I)
 J/P No. 28312(04) - S.H. 74D
 = P.O.T. Sta. 98+49.00 on SAP No. 1026(I) plans.

OKLAHOMA DEPARTMENT OF TRANSPORTATION		SURVEY DIVISION	
PLS	JLC	SURVEY DATA SHEET	
DRAWN	BJG		
CHECKED	JLC		
APPROVED	JLC		
CREW	CARROLL		
SWO 4938 (1) PROJECT NO. 28312(04) SHEET NO. 507			

SSDATESS